

YEAR 2022

CORE STATION 3024

ROAD NETWORK MAJOR

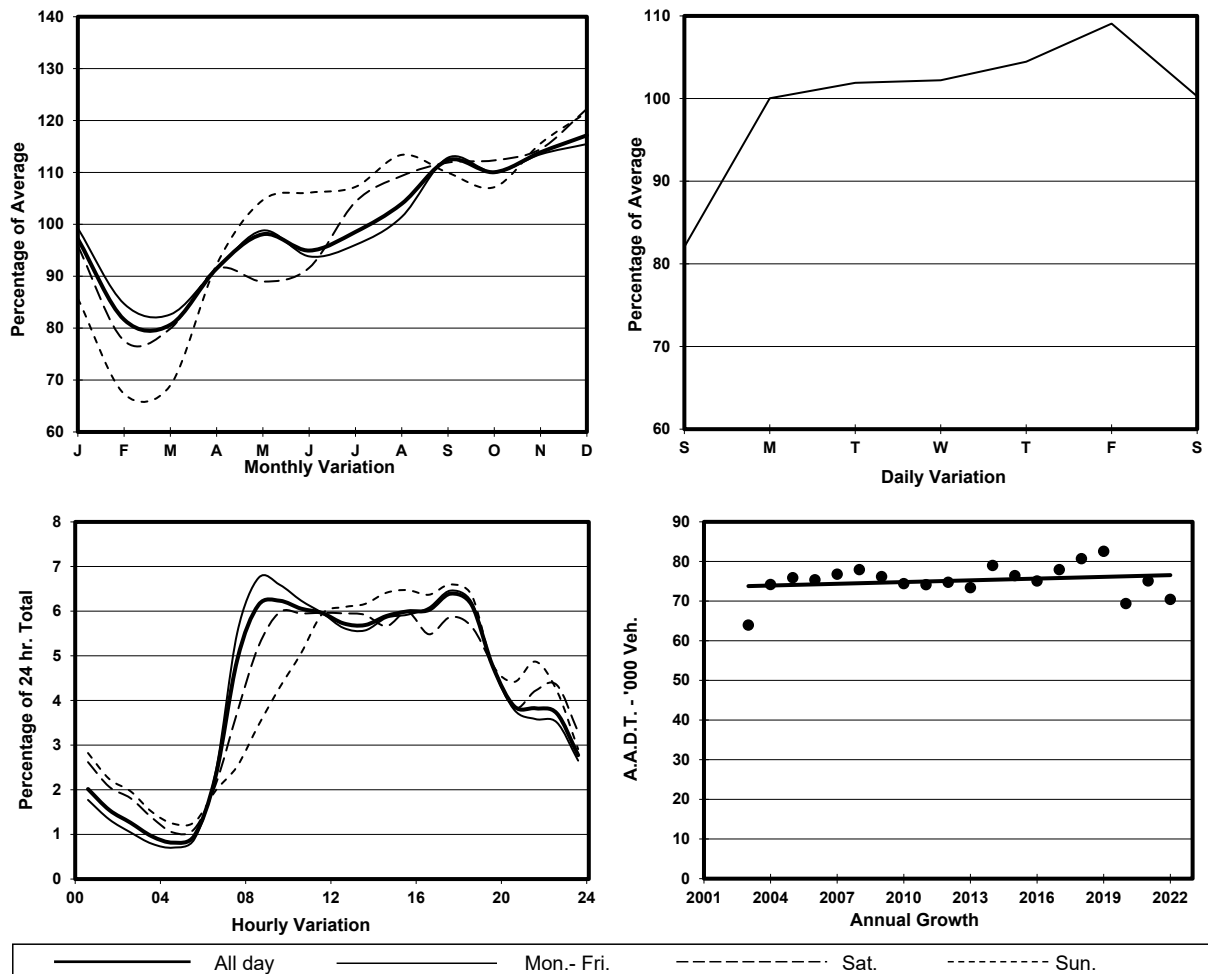
ROAD TYPE URBAN TRUNK ROAD

LINK WEST KOWLOON HIGHWAY (from SLIP RDS TO & FROM LIN CHEUNG RD & YAU MA TEI INT N/B RAMP to HING WAH ST W)

2.7m 14.8m 15.8m 3m

Northbound 3 lanes Southbound 4 lanes

1. TRAFFIC FLOW VARIATION AND GROWTH



2. TRAFFIC CHARACTERISTICS (BY DIRECTION)

| Parameter | All - Day | Mon. - Fri. | Sat. | Sun. |
|--------------------------------------|-----------|-------------|-----------|-----------|
| SOUTH BOUND | | | | |
| A.A.D.T. | 40830 | 42560 | 41780 | 34170 |
| R 12 / 24 - % | 74.9 | 76.6 | 70.6 | 69.5 |
| R 16 / 24 - % | 88.1 | 88.9 | 85.7 | 85.6 |
| AM Peak Hour | 0900-1000 | 0800-0900 | 0900-1000 | 0900-1000 |
| One-way flow at AM peak hour | 2970 | 3390 | 3070 | 1710 |
| T - % (AM) | - | 12.5 | - | - |
| PM Peak Hour | 1700-1800 | 1700-1800 | 1700-1800 | 1700-1800 |
| One-way flow at PM peak hour | 2280 | 2340 | 2170 | 2200 |
| T - % (PM) | - | 8 | - | - |
| Prop.of commercial vehicles - 16 hr. | - | 10.3 | - | - |
| NORTH BOUND | | | | |
| A.A.D.T. | 29590 | 31140 | 29790 | 23690 |
| R 12 / 24 - % | 66.1 | 67.5 | 62.9 | 60.3 |
| R 16 / 24 - % | 86.3 | 87.6 | 82.9 | 81.7 |
| AM Peak Hour | 0900-1000 | 0900-1000 | 0900-1000 | 0900-1000 |
| One-way flow at AM peak hour | 1420 | 1610 | 1210 | 770 |
| T - % (AM) | - | 12.8 | - | - |
| PM Peak Hour | 1700-1800 | 1700-1800 | 1700-1800 | 1700-1800 |
| One-way flow at PM peak hour | 2230 | 2420 | 2030 | 1620 |
| T - % (PM) | - | 8.8 | - | - |
| Prop.of commercial vehicles - 16 hr. | - | 11 | - | - |

3. OTHER INFORMATION AND COMMENT

4. Vehicle classification and occupancy - Monday to Friday

| Time | | Class of vehicle | | | | | | | | | |
|------------------------|-----|------------------|----------------|------|---------------|-----|------------|-------|----------------|---------|------|
| | | Motor Cycle | Private Car | Taxi | Private LB | PLB | Goods veh. | | Non Fr. Bus | Fr. Bus | |
| | | | | | | | Light | M & H | | SD | DD |
| 0700-0800 | Pro | 4.6 | 48.8 | 13.7 | 0.9 | 0.0 | 17.3 | 9.4 | 1.8 | 0.0 | 3.5 |
| | Ocp | 1.1 | 1.2 | 2.0 | 7.8 | 0.0 | 1.2 | 1.3 | 19.5 | 0.0 | 72.6 |
| 0800-0900 Peak hour | Pro | 3.4 | 52.4 | 12.9 | 0.4 | 0.0 | 18.4 | 4.7 | 3.3 | 0.0 | 4.4 |
| | Ocp | 1.1 | 1.2 | 2.1 | 1.6 | 0.0 | 1.4 | 1.2 | 25.3 | 0.0 | 65.1 |
| 0900-1000 | Pro | 1.4 | 45.2 | 17.7 | 0.3 | 0.0 | 22.5 | 8.0 | 1.4 | 0.0 | 3.4 |
| | Ocp | 1.1 | 1.2 | 2.0 | 3.6 | 0.0 | 1.4 | 1.2 | 12.9 | 0.0 | 45.5 |
| 1000-1100 | Pro | 2.4 | 50.8 | 8.9 | 0.3 | 0.0 | 24.1 | 9.9 | 1.1 | 0.0 | 2.6 |
| | Ocp | 1.0 | 1.3 | 2.1 | 1.7 | 0.0 | 1.4 | 1.3 | 1.9 | 0.0 | 41.9 |
| 1100-1200 | Pro | 1.3 | 47.8 | 15.8 | 0.8 | 0.0 | 23.1 | 7.8 | 1.1 | 0.1 | 2.3 |
| | Ocp | 1.1 | 1.3 | 1.9 | 1.7 | 0.0 | 1.5 | 1.2 | 8.8 | 1.0 | 42.6 |
| 1200-1300 | Pro | 1.6 | 49.7 | 13.9 | 0.4 | 0.0 | 21.7 | 9.4 | 1.1 | 0.0 | 2.2 |
| | Ocp | 1.1 | 1.3 | 2.0 | 6.0 | 0.0 | 1.4 | 1.2 | 5.4 | 0.0 | 43.8 |
| 1300-1400 | Pro | 1.6 | 45.9 | 15.3 | 0.9 | 0.0 | 24.4 | 8.2 | 1.2 | 0.0 | 2.6 |
| | Ocp | 1.0 | 1.2 | 2.0 | 2.9 | 0.0 | 1.4 | 1.2 | 6.1 | 0.0 | 46.7 |
| 1400-1500 | Pro | 1.1 | 50.7 | 14.1 | 0.8 | 0.0 | 21.8 | 8.1 | 1.1 | 0.0 | 2.2 |
| | Ocp | 1.1 | 1.3 | 2.1 | 1.6 | 0.0 | 1.3 | 1.2 | 3.9 | 0.0 | 40.6 |
| 1500-1600 | Pro | 1.4 | 50.0 | 14.6 | 0.9 | 0.0 | 23.8 | 6.2 | 0.6 | 0.0 | 2.4 |
| | Ocp | 1.0 | 1.2 | 2.0 | 1.9 | 0.0 | 1.3 | 1.3 | 1.9 | 0.0 | 38.6 |
| 1600-1700 | Pro | 1.9 | 49.7 | 12.2 | 0.4 | 0.0 | 24.5 | 6.4 | 2.2 | 0.0 | 2.6 |
| | Ocp | 1.1 | 1.3 | 2.0 | 1.2 | 0.0 | 1.3 | 1.2 | 6.1 | 0.0 | 47.9 |
| 1700-1800 | Pro | 4.2 | 56.9 | 12.2 | 0.4 | 0.0 | 18.0 | 3.7 | 1.3 | 0.0 | 3.3 |
| | Ocp | 1.0 | 1.2 | 2.0 | 5.2 | 0.0 | 1.3 | 1.2 | 5.5 | 0.0 | 61.0 |
| 1800-1900 | Pro | 3.4 | 65.4 | 12.7 | 0.1 | 0.0 | 10.8 | 1.8 | 2.0 | 0.0 | 3.7 |
| | Ocp | 1.0 | 1.4 | 2.0 | 3.0 | 0.0 | 1.2 | 1.4 | 36.5 | 0.0 | 76.4 |
| 1900-2000 | Pro | 2.5 | 71.7 | 13.7 | 0.0 | 0.0 | 6.6 | 1.7 | 1.6 | 0.0 | 2.2 |
| | Ocp | 1.0 | 1.3 | 2.0 | 0.0 | 0.0 | 1.3 | 1.3 | 27.3 | 0.0 | 48.7 |
| 2000-2100 | Pro | 2.1 | 63.8 | 18.5 | 0.1 | 0.0 | 6.6 | 2.0 | 2.0 | 0.0 | 4.8 |
| | Ocp | 1.0 | 1.3 | 1.9 | 1.0 | 0.0 | 1.3 | 1.3 | 11.3 | 0.0 | 50.9 |
| 2100-2200 | Pro | 2.8 | 59.3 | 22.7 | 0.1 | 0.0 | 7.0 | 2.0 | 1.9 | 0.0 | 4.3 |
| | Ocp | 1.1 | 1.4 | 1.9 | 2.0 | 0.0 | 1.1 | 1.1 | 10.6 | 0.0 | 45.5 |
| 2200-2300 | Pro | 1.9 | 59.5 | 25.3 | 0.4 | 0.0 | 6.9 | 1.6 | 0.7 | 0.1 | 3.6 |
| | Ocp | 1.1 | 1.2 | 1.7 | 3.3 | 0.0 | 1.2 | 1.2 | 4.7 | 6.0 | 47.5 |
| 16 hours | Pro | 2.4 | 53.9 | 14.8 | 0.5 | 0.0 | 17.9 | 5.8 | 1.6 | 0.1 | 3.2 |
| | Ocp | 1.1 | 1.3 | 2.0 | 3.1 | 0.0 | 1.3 | 1.2 | 16.1 | 3.5 | 54.0 |

Legend: Pro. Proportion of vehicles in % (Sum may not add up to 100% due to figure rounding)*

Ocp. Average occupancy of vehicles including both driver and passengers*

M&H Medium and Heavy

* All traffic data are collected from combined bounds